



The Palette

Newsletter of the Bairnsdale and District Arts Society Inc.

October - January 2017 : No. 18

GLORIOUS GIPPSLAND EXHIBITION EASTER 2017

WORKSHOP PROGRAM 2017

Jean Wilson has booked
some fantastic tutors
for this year.

18-19 February

Robyn Woodward

Enjoyment with Your Brushes
(Acrylics)

27-28 May

Michael Goff

Oils with Palette Knives

17-18 June

Lois Brown

Watercolour Workshop

5-6 August

Lyn Mellady

Pastel Workshop

14-15 October

Ted Berry

Plein Air—Open Medium
Workshop



Dear Members

By now everybody will have received an Entry Form for our biennial **Glorious Gippsland Exhibition** being held in St Mary's Hall Bairnsdale at Easter.

The Glorious Gippsland Sub-Committee has been very active over the last nine months and as promised in my recent letter to you here is a 'summary' of progress to date:-

'Logo' competition winner 'Lunch at Metung' (overleaf)
by Barb Morris.

Venue booked St Mary's Hall - 4 days of Easter, plus Opening Night.

Judge Paul McDonald-Smith, OAM (for services to the Arts), has accepted our invitation to judge the exhibition.

Opening Night Thursday 13th April with our local Tim Bull, MP to 'officially open' the show.

Prizes and Categories have been finalised and the information distributed on the Entry Form.

Sponsorship Drive A 'Presentation Folder' produced and team appointed.

Shire Event Grant has been applied for with an outcome expected in March.



Lunch at Metung by Barb Morris

ENTRIES: Promotion to Artists – Entry Form sent out widely and six 'Collection Points' around Gippsland organised. The poster for Art Groups being distributed.

Other fund-raising :

Sausage Sizzles at Bunnings (Jan 29th & Feb 26th)

Trivia Night (March 17th),

Raffle campaign (Feb, March, April)

Display Stands – Sixteen older stands refabricated (welded and painted) and covered in new black hessian to match the other sixteen existing stands.

Event Marketing has started using professional graphic designed material created by a Committee Member. 'Glorious Gippsland' poster now on the Art Society's Facebook page and East Gippsland Marketing's Facebook page and soon to be on others.

SPONSORS

A small team from the Committee (headed by Maree Stewart) has been seeking 'sponsorship' from local businesses to cover the cost of the prizes on offer.

Liz Gridley designed a presentation brochure for prospective sponsors to consider and I'm delighted to announce that we have been most successful with many local businesses supporting the event.

By way of thanking the businesses who generously donated, could we please request that members support them, if you can. Our Sponsors are Eastwood Retirement Village, Gallery Frame Makers & Art Supplies, Bairnsdale Tyre Service, Venables Cranes, Alinta Power, Kennedy Trailers, Patties (Four 'n Twenty), The Sporting and Convention Centre, Peter Murray Funerals, Financial Solutions, Focus Photography & Framing, Total Store Self Storage, Harvey Norman, G Focus Photography - Traralgon, Riversleigh Hotel, RSL, Betta Electrical and Kmart. Note: Tim Bull and the Ottaway family are also sponsors.

HELP NEEDED

WOULD YOU LIKE TO GET 'INVOLVED'?

Sausage Sizzle at Bunnings:

Sunday 26th February

Volunteers needed to help on the day – can you do a 2 hour shift?

Phone: Jenni on 51 52 2509 to go on the roster.

Trivia Night at the Art Society:

Friday 17th March

Come along, join in the fun, help raise some funds. (Details inside this issue.)

Simple Catering for Volunteers at the Show:

Thursday 13th – Monday 17th April.

We need helpers to make sandwiches etc. for the volunteers who are setting-up the show and about two people during the four days to replenish.

Phone: Carolyn on 51 52 9342 to go on the roster.

Entries:

If you have an 'entry' for the Show which has an unusual or interesting story around it, please let me know (**Gael 51 56 8889**) as we may feature your entry in the local paper to assist with promotion of the event.

Show Roster:

Can you spare a couple of hours to help during the show? Possibly on the door or helping the viewing public with any queries.

Contact: Gael 51 568889 or gaelrand@gmail to go on a roster.

PROMOTION POSTER

Enclosed is a poster to get the word out about the Show. Can you please show your family and friends and encourage them to attend our first ever Easter Glorious Gippsland Show OR ask permission to place it in a shop window or at a club you attend.

IN SUMMARY

This is the third 'Glorious Gippsland' Exhibition and the first to be held at Easter over four days. We are working hard to make it a great success and we look forward to your entries and any support you may be able to offer for the long term benefit of all

Art Society Members.

Thank you..

Gael Rand

President

From an ugly
storage
space full of
dust

Your New Library is OPEN for business

and spiders
..... to
beautiful
made to
measure
shelves
begging for

books to an incredible new library space for all to enjoy.

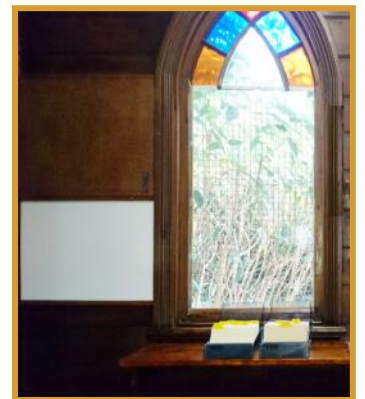


When I took on the role of Librarian it came with one main condition - the library has to be reorganized and shifted to that wasted space at the front of the hall and now that it is 90% finished I think we have a wonderful space for all society members to enjoy. In fact, I can almost guarantee, you will find books in the collection that you never knew were there! All the books have been lifted from floor level to eye level so no more crawling around on the carpet. They have been reclassified into eight colour coded sections and all numbered to their matching card.

- ◆ **Australian Art/ists** (Eucalyptus Green)
includes their works and biographies
- ◆ **Drawing** (Orange)
includes pen and ink, charcoal and graphite
- ◆ **Painting** (Emerald Green)
includes oils and acrylics
- ◆ **Masters** (Yellow)
their works, biographies and collections
- ◆ **Pastels** (Pink)
includes techniques
- ◆ **Reference/Sundry** (Purple)
includes anything I couldn't put elsewhere!
- ◆ **Collections/Series** (Cobalt Blue)
includes series' such as *Strokes of Genius*
- ◆ **Watercolour** (Sky Blue)
includes techniques and artists

Don't worry about remembering the codes, a list will appear in the library to help you. I have identified just a few "non borrows" mainly due to their condition and also envisage all the *Australian Artist* binders being tidied up and made more

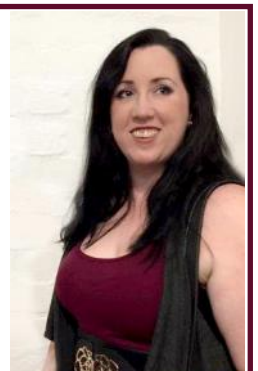
accessible as we progress. The borrowing process remains the same, write your name (legibly please) onto the card, the date you take the book and when returned, the date you do so. The boxes are on the shelf under the window.



There is also new notice boards there for you to put in requests for publications that you would like to see purchased. and an inventory will appear soon. It has been a huge amount of work, in excess of 250 hours have been put in by myself, Janet Borg, Chris Matthews and Liz Gridley with Paul, Janet's husband, building the beautiful shelves. Thank you all as there is no way I would have done it alone.

DEB SQUIRES
Librarian

With this edition of *The Palette* we farewell Liz Gridley who has disappeared back to the big smoke but not before leaving an impression on those of us who knew her in the society. Liz joined for the social side, she certainly didn't need the tutoring!, and became a valuable member of the *Glorious Gippsland* committee. She promises to stay in touch and still contribute. Best wishes Liz.



TRIV?ANight

FUNdraiser



FRIDAY 17TH MARCH @ 7 PM
AT THE ARTS CENTRE

\$10 per person

includes snacks and supper (BYO drinks)

This is a great night out and a fundraiser to support the
Easter 'Glorious Gippsland' Exhibition.

Come along – bring your friends
make-up a table or just join in the fun

SHARPEN UP THE BRAIN CELLS GREAT PRIZES TO BE WON

Bookings: Carolyn Corr 5152 9342

POETRY WRITING & APPRECIATION TUTOR: BILL COTTER 6 WEEK COURSE

Poetry Writing Poetry Reading
Poetry Presentation Poetry Appreciation

No previous experience is needed.

Just a desire to enjoy the
magical world of poetry.

Course due to start late February.

Sessions: 1-1/2 hours

Bill Cotter is the author of many published
books of poetry and is a trained teacher.

EXPRESSIONS OF INTEREST INVITED
PHONE BILL ON 5152 5484

DUE TO POPULAR DEMAND

DRAWING CLASSES HAVE BEEN
EXTENDED TO **FOUR CLASSES ON**

TUESDAYS WITH MORNING AND EVENING
CLASSES SPECIFICALLY DESIGNED
FOR BEGINNERS WHO DON'T NOW WHERE
TO START ... AND **LIFE DRAWING RETURNS**
ON THE FIRST MONDAY OF THE MONTH.

SEE BACK PAGE

"REGULAR CLASSES" FOR DETAILS.

CHANGE-OVER SMALL PAINTINGS FOR SALE AT BOOK SHOP

If you have a framed small painting you
would like hung at the Book Store next
door to Coles which you would like to sell,
now is your chance!!

phone: BETTY DU VE 51 52 2325

CONGRATULATIONS MARGARET LOMAS

For the second time, Margaret is a finalist in an Australian Artist (March edition) competition. The competition subject this time was "Oceans, Rivers and Lakes."

Margaret's watercolour is entitled "Down to the Sea" and was chosen because she thought it would be a challenge which she enjoys and because it needed lots of detail, especially in the initial drawing stage. She usually spends a lot of time on this first stage as it is a huge help later on.

Margaret also likes the fact that there is so much to look at in this painting; lots of different textures and shapes to keep things interesting and hopefully captures the feeling of water racing through the rocks to the sea. Well done Margaret. We are proud that once again your work has been recognized in the wider art community.



2016 ART SCHOLARSHIP WINNER KATE HOLZAPFEL



The Art Society has awarded an Art Encouragement Scholarship (worth \$250) to 15 year old Kate Holzapfel to further her art studies at the Society.

Kate is a student of our 'Teen Art' Class and tutor Margaret Lomas commended Kate for her artwork which has improved greatly in the last year, making her a worthy winner of the award. During 2016 Margaret has been teaching a

'structured course' in watercolour painting and Kate's award is a weekend workshop in June being taught by renowned, prize winning watercolour artist - Lois Brown, plus a range of good quality art supplies. Margaret will be on hand to mentor Kate so that she gets the most out of the experience. Kate has been a student at the Society's teen art classes for about four years and rates art as a major interest in her life. She

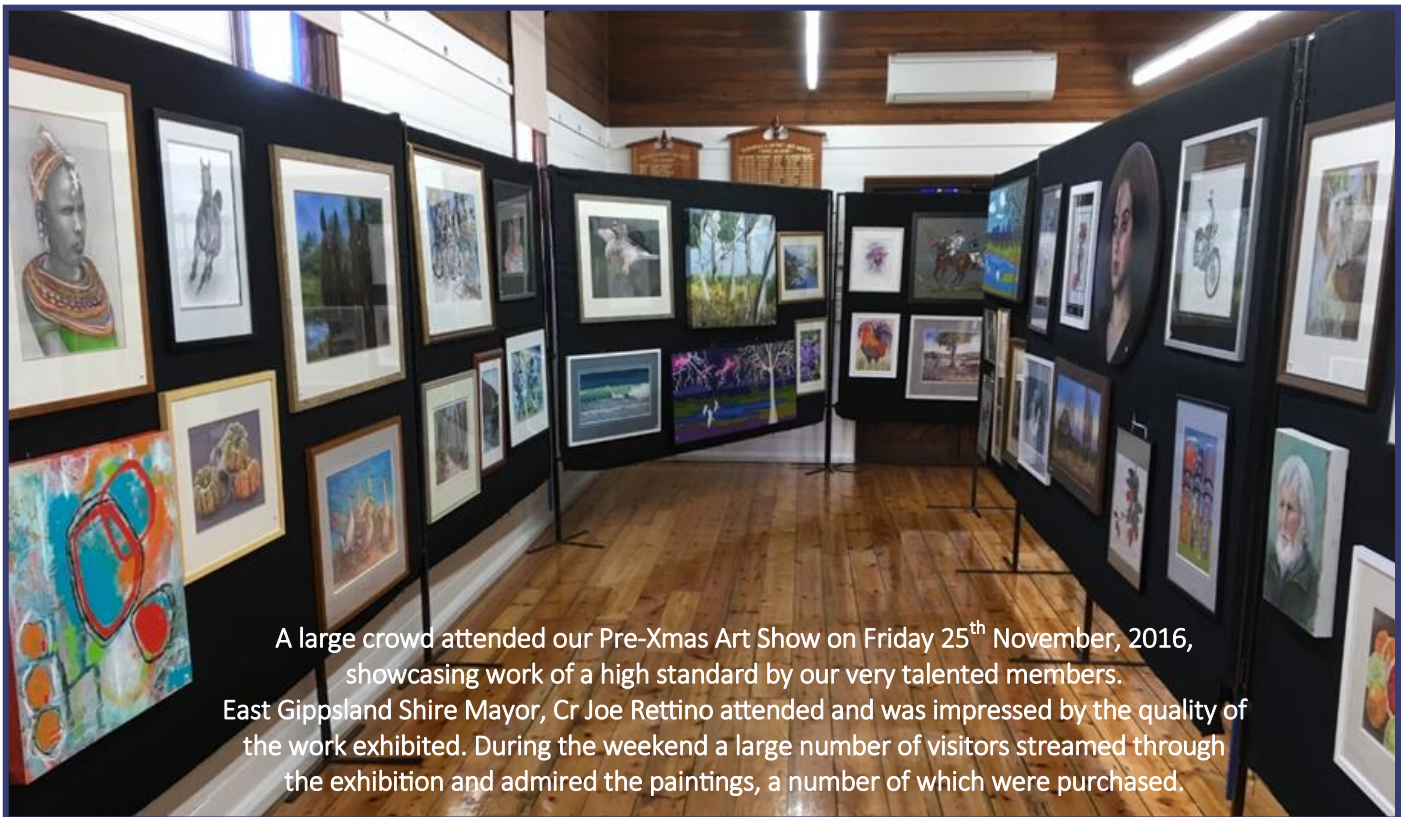
Kate Holzapfel being congratulated by President Gael Rand after she chose her art supplies.

is in Year 10 at the Bairnsdale Secondary College and will be continuing her art study this year.

Recent coloured pencil work by Kate Holzapfel.



PRE - XMAS ART SHOW AT THE ART SOCIETY



A large crowd attended our Pre-Xmas Art Show on Friday 25th November, 2016, showcasing work of a high standard by our very talented members. East Gippsland Shire Mayor, Cr Joe Rettino attended and was impressed by the quality of the work exhibited. During the weekend a large number of visitors streamed through the exhibition and admired the paintings, a number of which were purchased.



Congratulations to the multi-talented Liz Gridley whose portrait, "Model #1," (oil on board) was awarded PEOPLE'S CHOICE.



East Gippsland Art Gallery Director, Crystal Stubbs, taking in the atmosphere at the show.

Congratulations to BADAS member, Trish Wagstaff, who was the lucky winner of the raffle *Mitchell River Morning*, a watercolour painted and donated by Margaret Lomas.

Workshop Opportunity **ROBYN WOODWARD** 18th & 19th FEBRUARY 2017



An example of Robyn's work.

ACRYLIC WORKSHOP Enjoyment with your Brushes

This is Robyn's third workshop at the Arts Centre and she remains popular for a very good reason – those attending always learn new and interesting techniques and have a great time in the process. Robyn has a unique contemporary style and often uses textures in her works.

PROGRAM

Day 1 Demonstration on how to stretch a canvas, plus how to use different fabric e.g. hessian. Create a floral painting using texture and complete on Day 2.

REQUIREMENTS

60cm x 90cm MDF or Stretched Canvas (apply 2 coats of Gesso or house paint before the Workshop).
Acrylic Paints, Gel or Impasto Medium, Gesso or House Paint,
Craft Brushes and a few Artist Brushes
Water Spray Bottle, Wear Old Clothes and bring a drop sheet

One More Requirement:
IMAGINATION AND A SMILE!!

Don't forget lunch to share and your name badge.

At this stage there are two vacancies due to cancellations, so ring Jean 0414 293 951 super quick if you are interested in attending this exciting workshop.

Workshop Opportunity **MICHAEL GOFF** 27th & 28th MAY 2017



An example of Michael's work.

OILS WITH PALETTE KNIVES

Michael Goff is a highly successful and skilled full time Artist from Melbourne. He is very experienced at conducting workshops and judging Art Shows – in fact was our judge for the 2015 Glorious Gippsland Exhibition. This follows his very popular workshop last year at the Arts Centre.

The Workshop is suitable for people new to oils as well as more experienced artists.

REQUIREMENTS

Oil Paints:

Yellows: Lemon, Cad Deep, Ochre
Blues: Phthalo, Cobalt and Ultramarine
Reds: Vermillion, Alazarin Crimson & Magenta
White: Titanium

Palette Knives:

1 x large & 1 medium tear-drop shape
1 x small & 1 medium pointed shape

Canvas: No bigger than 16 x 20 inches
Palette, Painting Medium (e.g. liquol), Rags, Paper Towel, Odourless solvent and 1 large bristle brush. Plus 1 long taper rigger brush No. 2.

Lunch to share and name badge.

COST: \$75.00 Members
\$85.00 Non Members
(\$20 Deposit to secure your place).

BOOKINGS AND QUERIES

Phone: Jean Wilson 0414 293 951

What's on at a glance

Robyn Woodward
Enjoyment with your Brushes
(Acrylic) Workshop
18 - 19 February

Sausage Sizzle at Bunnings
Sunday 26 February

Trivia Night at the Art Society
Friday 17 March

Opening Night
Easter Glorious Gippsland Exhibition
Thursday 13 April

Easter Glorious Gippsland Exhibition
Friday 14 - Monday 17 April

Michael Goff
Oils with Palette Knives Workshop
weekend 27 - 28 May

Lois Brown
Watercolour Workshop
weekend 17 - 18 June

Lyn Mellady
Pastel Workshop
weekend 5 - 6 August

Ted Berry
Plein Air - Open Medium Workshop
weekend 14 - 15 October

Regular Classes Open Days

MONDAY

Workshop Painting Morning (Open Session)
10am—12noon
All welcome

Junior Drawers / Teen Art
4.30pm—6.00pm
Teen Art p. Margaret 5153 0220
Junior Drawers p. Debbie 0438 522378

FIRST MONDAY ON MONTH

Life Drawing
6.30pm—8.30pm
p. Robbie 0432 696 824

TUESDAY

Drawing Class
9.00am—12noon **OR** 1.00pm—4.00pm
p. Carolyn 5152 9342

Introduction to Drawing
9.00am—12noon **OR** 7.00pm—9.00pm
p. Robbie 0432 696 824

WEDNESDAY

Beginners & Improvers
9.00am—12noon
p. Betty 5152 2325

THURSDAY

Pastel Group (Open Session)
9.30am—12.30pm
p. Gael 5156 8889
or just come and join in

EVERY SECOND FRIDAY

Plein Air Group
location details available
p. Anna 5152 2313

All tutored class \$12 per session
except
Life Drawing \$15 per session
Kids Art \$10 per session
Open sessions \$4